

# ashirvad

## PIPES

### CPVC PLUMBING SYSTEM

HOT WHEN YOU WANT IT. COLD WHEN YOU NEED IT.

#### WHY ASHIRVAD CPVC IS THE BEST CHOICE?

- ✓ Ideal for hot & cold water applications
- ✓ Can withstand max 28.1 bar pressure at 23°C & max 8.79 bar at 82°C
- ✓ Widest range of pipes and fittings from 1/2" to 6"
- ✓ NSF Certified raw material from Lubrizol USA, inventors of cPVC technology
- ✓ UV stabilised and designed for over 50 years life
- ✓ Regular lab testing of finished products in Europe & USA
- ✓ Tested, approved and used in India in the highest number of projects for over 10 years
- ✓ First to be ISI marked
- ✓ First to come up with the alignment system



WARRANTY ON ASHIRVAD PRODUCTS NOT APPLICABLE IN CASE OF USE IN COMBINATION WITH ANY OTHER BRAND AND MAKE OF PIPES AND FITTINGS OR SOLVENT

**FLOWGUARD PLUS**  
PIPE & FITTINGS™

FLOWGUARD is the registered mark of The Lubrizol Corporation.  
The Lubrizol Corporation is a Berkshire Hathaway Company.

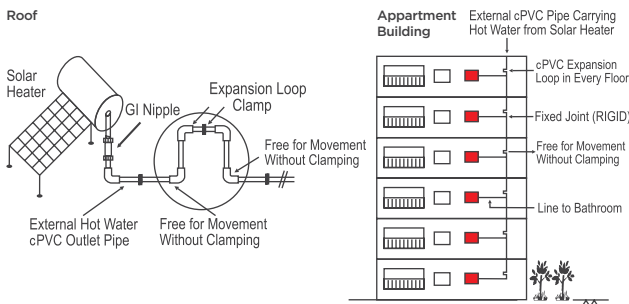
## Ashirvad - Leadership You Can Trust

Ashirvad has been setting benchmarks for quality since 1975. The leader in the manufacture of PVC and CPVC piping systems, **Ashirvad Pipes is ISO 9001:2008 certified and is a National Award winning company.** With its state-of-the-art factory spread over **40 acres**, the company has an **annual manufacturing capacity of 1,30,000 metric tons** and manufactures a complete range of high technology and superior quality plastic piping systems for domestic and agricultural use. **The manufacturing systems adhere to the highest level of international quality** for a maintenance free life.

With its manufacturing base in Bengaluru, Ashirvad processes CPVC compound from Lubrizol to manufacture pipes and fittings, ensuring the highest international quality standards.

Class of Pipe/Fitting	Standard	Sizes Available
SDR 11 Pipe (class 1)	IS 15778 ASTM D2846	½" - 2"
SDR 13.5 Pipe (class 2)	IS 15778 ASTM D2846	½" - 2"
SCH 40 Pipe	ASTM F 441	2½" - 6"
SCH 80 Pipe	ASTM F 441	2½" - 4"
SDR 11 Fittings	ASTM D 2846	½" - 2"
SCH 40 Fittings	ASTM F 438	2½" - 6"
SCH 80 Fittings	ASTM F 439	2½" - 4"
	<b>Operating Temperature</b>	<b>Operating Pressure</b>
SDR 11	27°C	28.14 kg/cm <sup>2</sup>
	82°C	6.93 kg/cm <sup>2</sup>
SDR 13.5	27°C	22.23 kg/cm <sup>2</sup>
	82°C	5.61 kg/cm <sup>2</sup>

## Correct Installation in Solar Water Lines Carrying Hot Water from a Solar Heating System



### ⚠️ Correct Installation in Solar Water Heater Lines

We do not recommend connecting CPVC pipes directly to the water heater outlet. First a one meter long metal nipple /GI pipe should be connected to the source so that the CPVC pipe is not damaged by the buildup of excessive radiant heat from the flue.

⚠️ **Expansion Loop:** For CPVC pipes, which are not embedded inside the wall, but are carrying hot water from boiler/solar water heater etc. it is most important to use ready-made expansion loop supplied by Ashirvad Pipes. Use one Ashirvad expansion loop for every 12 feet run of the pipe, between two fixed joints.

[www.ashirvad.com](http://www.ashirvad.com)

Ashirvad Pipes Pvt. Ltd., 4-B, Attibele Industrial Area, Hosur Road, Bengaluru - 562 107, India. Ph: +91 80 2782 0542 / 543 Fax: +91 80 2782 0463  
For more information or customer care write to: [info@ashirvad.com](mailto:info@ashirvad.com) or Call +91 99023 33333

## Water Purity Approved by National Sanitation Foundation - USA

Ashirvad CPVC pipes and fittings are made from NSF approved raw material. National Sanitation Foundation is an independent non-government body in USA for water purity standards and certifies the piping system to be used for potable drinking water application.

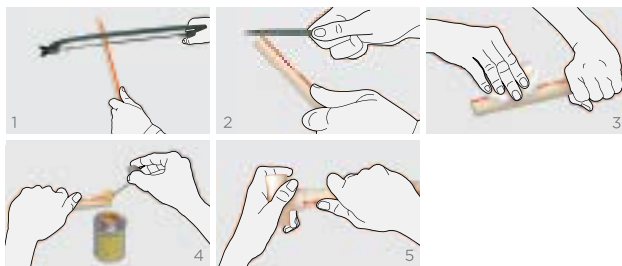
**ASHIRVAD FLOWGUARD™ PLUS CPVC pipes are joined with the fittings using Ashirvad CPVC solvent cement**, which is a single step fast setting solvent cement. The bonding takes place due to chemical fusion of the mating surfaces.

Ashirvad Solvent Cement eliminates the need of electric or any heat source for joining. It also does not require the use of a primer for systems upto 2".

## Approvals Across the Globe by Several Health and Standards Associations

NSF National Sanitation Foundation	USA	
DVGW Deutscher Verein des Gas-und Wasserfaches	Germany	
WRAS Water Regulations Advisory Scheme	United Kingdom	
CSTB Centre Scientifique et Technique du Bâtiment	France	
Kiwa	Netherlands	
TSE Turkish Standards Institution	Turkey	
CSA Canadian Standards Association	Canada	
BIS Bureau of Indian Standards	India	

## INSTALLATION



Ambient Temp.	Set and Cure Time	Pressure
	Up to 12 kg/cm <sup>2</sup>	
	½" to 1¼"	1½" to 2"
17° to 48°C	1 hr	2 hrs
5° to 17°C	3 hrs	4 hrs
-20° to 5°C	8 hrs	16 hrs

Ashirvad CPVC pipes and fittings have excellent chemical resistance and can withstand salty and aggressive water condition with variations in PH value of water flowing through it. This eliminates both electrolytic and galvanic corrosion, leading to water purity over the entire life span of the CPVC piping system.



SMART WATER MANAGEMENT PLUMBING . SANITARY . AGRICULTURE

